

Adsorption Behavior of Disperse Orange 30 on Polyester Fabric

¹Mohamad Ghaharpour, ²Abousaeed Rashidi and ³Habib Tayebi

¹Science and Research Branch, Islamic Azad University, Tehran, Iran

²Department of Textile, Islamic Azad University, Science and Research Branch, Tehran, Iran

³Department of Textile, Qaemshahr Branch, Islamic Azad University, Qaemshahr, Iran

Abstract: In this study, the adsorption behavior of disperse orange 30, including the adsorption isotherms and thermodynamic parameters on polyester fabric at different temperatures (90, 100, 110°C) were examined. To determine Adsorption Isotherm type, Nernst, Langmuir and Freundlich Adsorption Isotherms were used. Results indicate that the most Correlation Coefficient value belongs to Nernst's Adsorption Isotherms. Thermodynamic parameters such as enthalpy, entropy and standard affinity were studied; negativity of these parameters is the evidence of adsorption process's being exothermic.

Key words: Polyester • Disperse dye • Adsorption isotherm • Thermodynamics

INTRODUCTION

Polyesters are polymers which contain an Ester (-coo-) group in their chain. Polyesters are produced through chemical reaction of Dialcohol and Dicarboxylic acids [1, 2]. Fibers prepared from these compounds, due to their crystalline structure, have low water adsorption and are paler in color. Thus, for dyeing them we use the following methods: 1 – using dyeing materials with low molecular size 2 – applying high temperature and 3 - using swelling agents. The Most commonly used method is the application of high temperature [2-8]. Dye adsorption process in textile products is very complex and requires more detailed studies. To study this process, Adsorption isotherms and thermodynamic parameters are used. Adsorption isotherms which are commonly used include Nernst, Langmuir and Freundlich Adsorption Isotherms, each used in describing behavior of different dye adsorption. For example, to describe the adsorption behavior of acid dyes on nylon, Langmuir adsorption isotherm and to describe the adsorption behavior of direct dyes on cotton products, Freundlich adsorption isotherm are used [9-14]. Variables such as enthalpy difference (ΔH°), entropy (ΔS°) and Affinity ($\Delta \mu^\circ$) are used in determining Thermodynamic parameters values, with which, it can be determined whether the adsorption process is exothermic or endothermic [12].

MATERIALS AND METHODS

Experimental: The Polyester fabric used in these experiments is a product of Mazandaran Textile Factory. The desired fabric has a 29 weft density and a 19 warp density and a weight of 428.85 gr/m². The dye used in these experiments is the C.I. Disperse Orange 30 (Figure 1), with the commercial/trade name Dianix classic orange 30 SR, which were purchased from Dystar Company. The dye was used without any purification process and with its commercial degree of purity. Other used chemicals, including non-ionic detergent, sulfuric acid were purchased from Merck Co.

Instrumentation: A Jenway 6505 UV-Visible spectrophotometer was used for absorbance measurements using quartz cell of 1 cm path length. A pH meter (Jenway3510) was used to measure the pH values of the dyeing bath. For dyeing samples, Shadow Dyeing

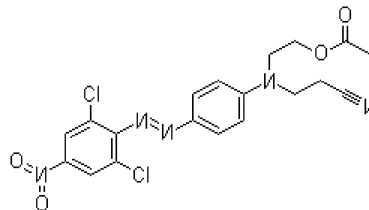


Fig. 1: Structure of C. I. Disperse Orange 30

Machine, model Lab Dyer-8RC, purchased from Yazd textile Company, was utilized. The mentioned device has 12 cylinders with a capacity of 200 cc. In this device, it is possible to raise the temperature to 130°C with precision tolerance of $\pm 1^\circ\text{C}$. It is worth noting that the device's rpm was 70 (revolutions per minute).

Methods: At first, to prepare the samples, a polyester fabric was immersed (entered) into a solution containing 2 grams of non-ionic detergent and one gram of sodium carbonate per liter and then was heated up to 70°C temperature within 80 minutes. Then the samples were washed and dried respectively. Dyeing polyester samples were carried out in a dye bath containing different dye solution, Temperatures (90, 100, 110°C), times (5–180 min) and dye materials (10, 50, 100, 150, 200 mg dye in 100 mL water) with L: G 100: 1. The dyed samples were rinsed with cold water and finally dried at ambient temperature.

Equilibrium Studies: One gram of polyester sample was dyed with different dye concentrations (10, 50, 100, 150, 200 mg dye in 100 mL water) at 90, 100 and 110°C, pH 4.5 for 120 min (equilibrium time). The quantities of dye adsorbed on polyester samples at equilibrium were estimated using the following eq. (1):

$$q_e = \frac{(c_o - c_e)v}{w} \quad (1)$$

Where, q_e is the quantity of dye adsorbed on polyester samples (mg/g) at equilibrium, C_o and C_e are the initial and equilibrium dye concentrations (mg/L), respectively. V is the volume of dye bath (mL) and W is the weight of polyester sample (g).

RESULTS AND DISCUSSION

Effect of pH on Color Adsorption: The pH is an important factor that controls the adsorption of dyes from aqueous solution onto polyester samples. Therefore, the effect of pH on the adsorption of disperse dye on polyester was studied in range of 3–6 because of normal polyester dyeing at this range. Figure 2 shows that the dyeing pH has a considerable effect on the adsorption of disperse dye on polyester yarns. It can be seen that the highest adsorption value of dye is obtained at pH=4.5. Thus, this pH value was used for later investigations.

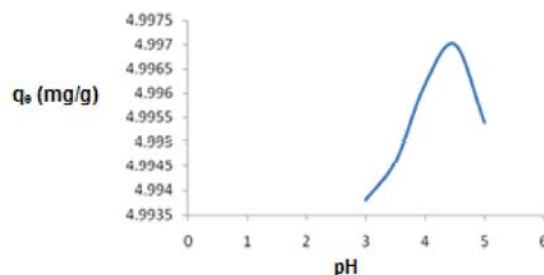


Fig. 2: Effect of pH on dye adsorption.

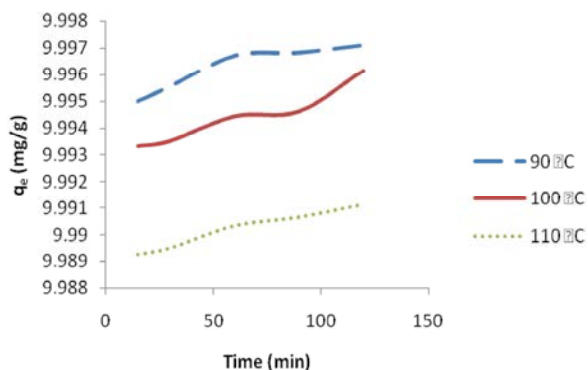


Fig. 3: Effect of time on color adsorption at different temperatures.

Rate of Dyeing (Effect of Time): Determining of equilibrium time is one of the most important characteristics which represent the adsorption of disperse dye on polyester. According to Figure 3, the dye adsorption increases with increasing of time to 120 min of dyeing for polyester samples. Longer time has no influence on dye adsorption. This means that the dye adsorption reaches to equilibrium for different temperatures. As it is shown in Figure 3, q_e values obtained increase as the time increases to 120 min and afterwards the q_e remains constant. This means that dyeing for 120 min gives a high q_e value. Therefore, time of dyeing was set at 120 min.

Effect of Concentration on Color Adsorption: Generally, the capacity of an adsorbent for a particular adsorbate involves the interaction of three properties: the concentration, C_o , of the adsorbate in the fluid phase, the concentration, q_e , of the adsorbate in the solid phase and the temperature, T , of the system. If T is kept constant, C_o and q_e can be graphed to represent the equilibrium. Such a plot gives an adsorption isotherm. An adsorption isotherm shows the equilibrium relationship at constant temperature, of concentration in the fluid and the adsorbed quantity. The equilibrium adsorption isotherm

is fundamentally important in the design of adsorption systems. Such adsorption isotherms may be used for scaling-up batch type processes with moderate success. In this research, to describe the relation between the amount of disperse dye adsorbed on polyester and the amount of dye in residual dyeing bath at different temperatures (90, 100 and 110°C), Langmuir, Freundlich and Nernst models were used.

Langmuir Adsorption Isotherm: Langmuir Adsorption isotherms are one of the most successful isotherm and model for real systems. This isotherm can be applied to cases in which the number of positions in the sorbent is limited and also when in each position of the adsorption, only a single molecule is adsorbed. So according to this theory, a certain amount of substance can be adsorbed and after reaching the saturation point (the point after which there is no possibility of adsorption), the increase in self-adsorbed material will not result in increase in adsorption. Langmuir adsorption isotherms relationship is defined as:

$$q_e = \frac{QbC_e}{1 + bC_e} \quad (2)$$

The linear relationships are also given by:

$$\frac{1}{q_e} = \frac{1}{Q} + \frac{1}{QbC_e} \quad (3)$$

Where, Q (mg/g) is the maximum amount of dyes adsorbed on unit weight of samples, C_e (mg/L) concentration of the dye in dye bath at the point of equilibrium, q_e (mg/g) the amount of dyes adsorbed on each gram of sample at equilibrium point and b (ml/mg) is Langmuir constant, which is related to tendency of the adsorbent material. The following reported figure (Figure 4) present, $1/q_e$ diagram against $1/C_e$ for dyed samples. The values of Q and b are obtained, respectively, from the ordinate origin and the coefficient of lines angles for different temperatures. Results show that, as the temperature rate rises, the adsorption process decreases and that shows the adsorption process is exothermic. Correlation coefficients are below 0.95 and means that experimental data not fitted to this model. The values of correlation coefficients are lower than the other two isotherms values. In all cases, the Langmuir equation represents the poorer fit of experimental data than the other isotherm equation.

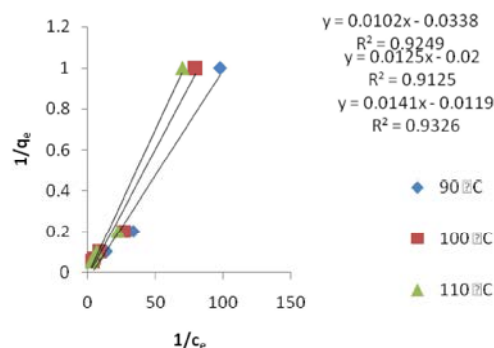


Fig. 4: Langmuir adsorption isotherms at different temperatures.

Freundlich Adsorption Isotherm: Another important adsorption isotherm which is important in studying the dyeing behavior of textile fibers using dyes is Freundlich adsorption isotherm. This type of isotherm can be applied to dye adsorption in unlimited situations. In fact, this type of adsorption isotherm is used for levels which have non-homogeneous surface energy. In these adsorption isotherm, at first, dye adsorption increases quickly, as the initial concentration increases and after occupying a considerable number of adsorption positions in the fiber, the adsorption speed declines. Freundlich adsorption isotherm equation is defined as:

$$q_e = Q_f C_e^{1/n} \quad (4)$$

Where (mg/g) Q_f is the maximum amount of dyes adsorbed on unit weight of fiber and $1/n$ represents the adsorption intensity. Linear relationship of the isotherms is also defined as:

$$\frac{1}{n} \ln C_e \ln q_e = \ln Q_f + \quad (5)$$

Values of Q_f and $1/n$ are obtained by plotting $\ln q_e$ diagram against $\ln C_e$.

According to the results obtained from the Freundlich adsorption equation, as shown in the Figure 5, one can understand that low coefficient values does not rummage the aptness or prove the inaptness of Freundlich adsorption isotherms in describing the adsorption behavior of disperse orange 30 on polyester products.

Nernst Adsorption Isotherms: Nernst adsorption isotherm equation is defined as:

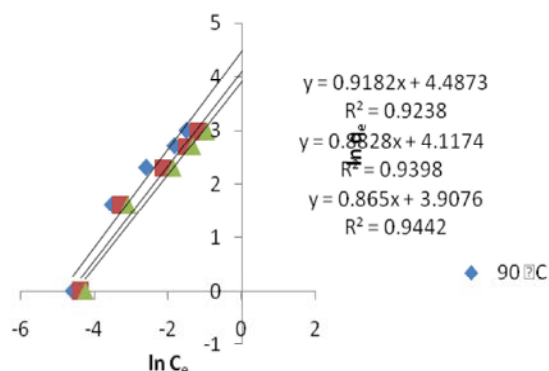


Fig. 5: Freundlich adsorption isotherm at different temperatures.

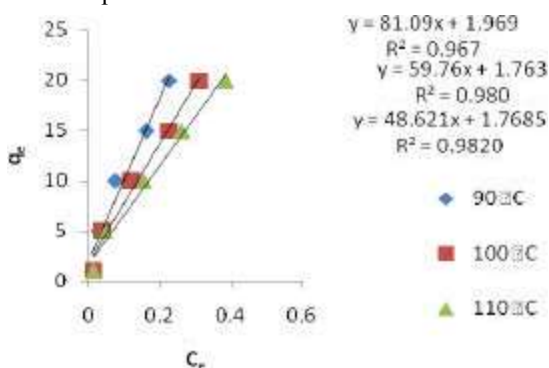


Fig. 6: Nernst Adsorption isotherms for dyed samples at different temperatures.

$$q_e = KC_e \quad (6)$$

Where: q_e is the concentration of dye in fiber at equilibrium (g/l), C_e concentration of dye in the dye bath at the time of equilibrium (g/l) and K is the maximum amount of dyes adsorbed on unit weight of fiber (mg/g).

Results show that (Figure 6 & Table 1), as the temperature rate raises, the value of K decreases. And this is because, the adsorption process of disperse orange 30 on polyester samples is an exothermic process. Moreover, according to the correlation coefficient values, it can be understood that Nernst adsorption isotherm is the best equation to describe the adsorption behavior of disperse orange 30 on polyester samples.

Thermodynamic Parameters: To investigate thermodynamic parameters of adsorption, parameters such as enthalpy difference (ΔH°), entropy (ΔS°) and standard Affinity ($\Delta \mu^\circ$), were used. The data for dyeing equilibrium is generally reported as the standard affinity of dyeing, $\Delta \mu^\circ$. Therefore, the standard affinity ($\Delta \mu^\circ$) was determined by using following eq. (7);

Table 1: Nernst equation constants for dyed samples at different temperatures

Temperature (°C)	90	100	110
K	81.0910	59.7640	48.6210
R ²	0.9676	0.9802	0.9820

Table 2: Thermodynamic parameters obtained values

ΔS°	ΔH°	$\Delta \mu^\circ$	K	Temperature (°C)
		-4.1277	3.9264	90
-30.7335	-4.5590	-3.8525	3.4635	100
		-3.6265	3.1234	110

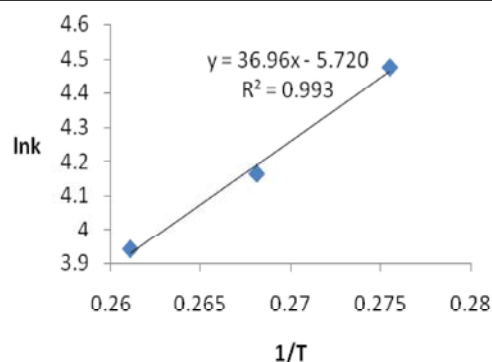


Fig. 7: 1/T against ln K plotted to determine Thermodynamic parameters

$$\Delta \mu^\circ = -RT \ln K \quad (7)$$

Where, R is the gas constant, T is the absolute temperature (K) and K is the partition ratio. The values of partition ratio (K) and standard affinity ($\Delta \mu^\circ$) are presented in Table 2. It can be observed from Table 2 that the standard affinity and partition ratio decrease as temperature increase. In Figure 7, to determine the heat of dyeing (ΔH°) and entropy of dyeing (ΔS°), $\ln K$ against $1/T$ was plotted and enthalpy and entropy were calculated by eq (8).

$$\ln K_2 = \frac{\Delta S^\circ}{R} - \frac{\Delta H^\circ}{RT} \quad (8)$$

Where, R is the gas constant, T is the absolute temperature (K), K_2 is the pseudo second order model constant, ΔH° is the heat of dyeing and ΔS° is the entropy of dyeing. The values of ΔH° and ΔS° are listed in Table 2. As the data above shows, all the parameters, enthalpy, entropy and standard affinity, have negative values which indicates that this process, dyeing polyester sample using disperse orange 30, is an exothermic process.

CONCLUSION

In this study, polyester samples were dyed using disperse orange 30 and to determine the type of adsorption isotherms, Langmuir, Freundlich and Nernst adsorption equations were used. Results showed that the highest correlation coefficient belongs to Nernst adsorption isotherm. According to the results obtained from thermodynamic parameters of adsorption, (enthalpy, entropy and standard affinity), it was observed that the adsorption process of disperse orange 30 on polyester samples is an exothermic process.

REFERENCES

1. Macintyre, J.E., 2005. Synthetic Fibers: Nylon, Polyester, Acrylic, Polyolefin, Boca Raton Boston New York Washington DC.
2. Burkinshaw, S.M., 1995. Chemical principles of synthetic fiber dyeing, London: Blackie.
3. Bird, C.I. and A.S. Boston, 1975. The Theory of Coloration of Textiles, Peters, L., Ed.; the Dyers Company Publications Trust: England.
4. Johnson, A., 1989. The Theory of Coloration of Textiles, S.D.C., Bradford, 2nd Ed.
5. Broadbent, A.D., 2001. Basic Principles of Textile Coloration, S.D.C., Bradford, pp: 269.
6. Jones, F., 1973. The Physical Chemistry of Dyeing, Rev. Prog. Color, 4: 64-72.
7. Vikerstaff, 1954. The Physical Chemistry of Dyeing, Oliver & Boyd, London and Edinburgh, 2nd Ed.
8. Rattee, I.D. and M.M. Breuer, 1974. The Physical Chemistry of Dye Adsorption, Academic Press, London and New York.
9. Aspland, J.R., 1992. Chapter 7: The Application of Nonionic Dyes to Fibers: Nonionics and their Sorption by Man-Made Fibers, AATCC, 24(10): 36-40.
10. Langmuir, L., 1916. The constitution and fundamental properties of solids. Am. Chem. Soc., 38: 2221-2295.
11. Freundlich, H.M.F., 1906. Über die adsorption in losungen, Z., Phys. Chem., 57(A): 385-470.
12. Qada, E.N., S.J. Allen and M. Walker, 2006. Adsorption of Methylene Blue onto activated carbon produced from steam activated bituminous coal: A study of equilibrium adsorption isotherm, Chem. Eng. J., 124(1-3): 103-110.
13. Park, K.H., M. Casetta and V. Koncar, 2002. Diffusion of Disperse Dyes into Microfibers and Conventional Polyester Fibers, Color. Technol., 118: 319-324.
14. Bird, C.L. and F. Manchester, 1954. The Dyeing of Acetate Rayon with Disperse Dyes: Adsorption Isotherms. J.S.D.C., 71: 604-608.